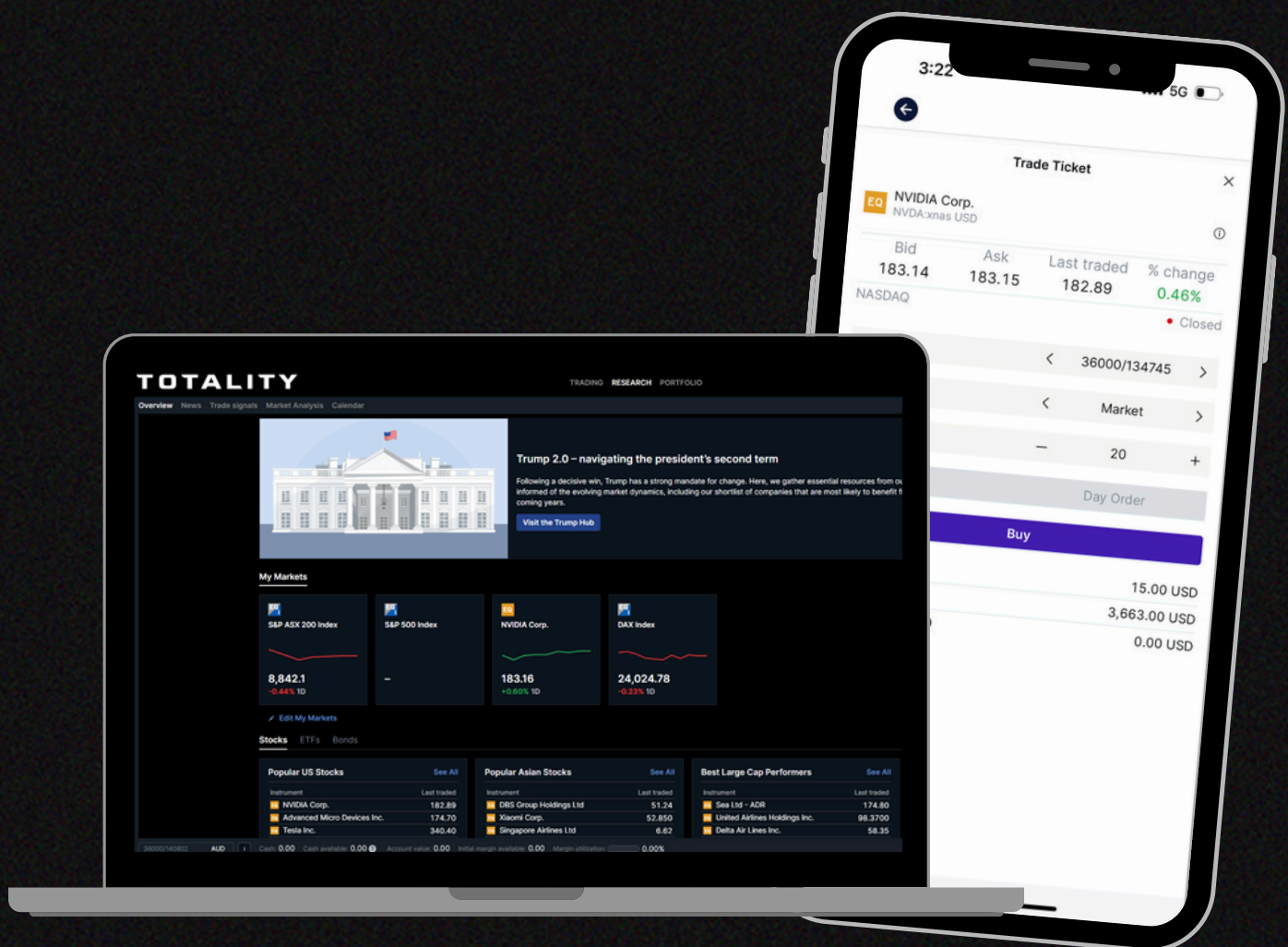


# How to access Totality Edge on both mobile and desktop devices.





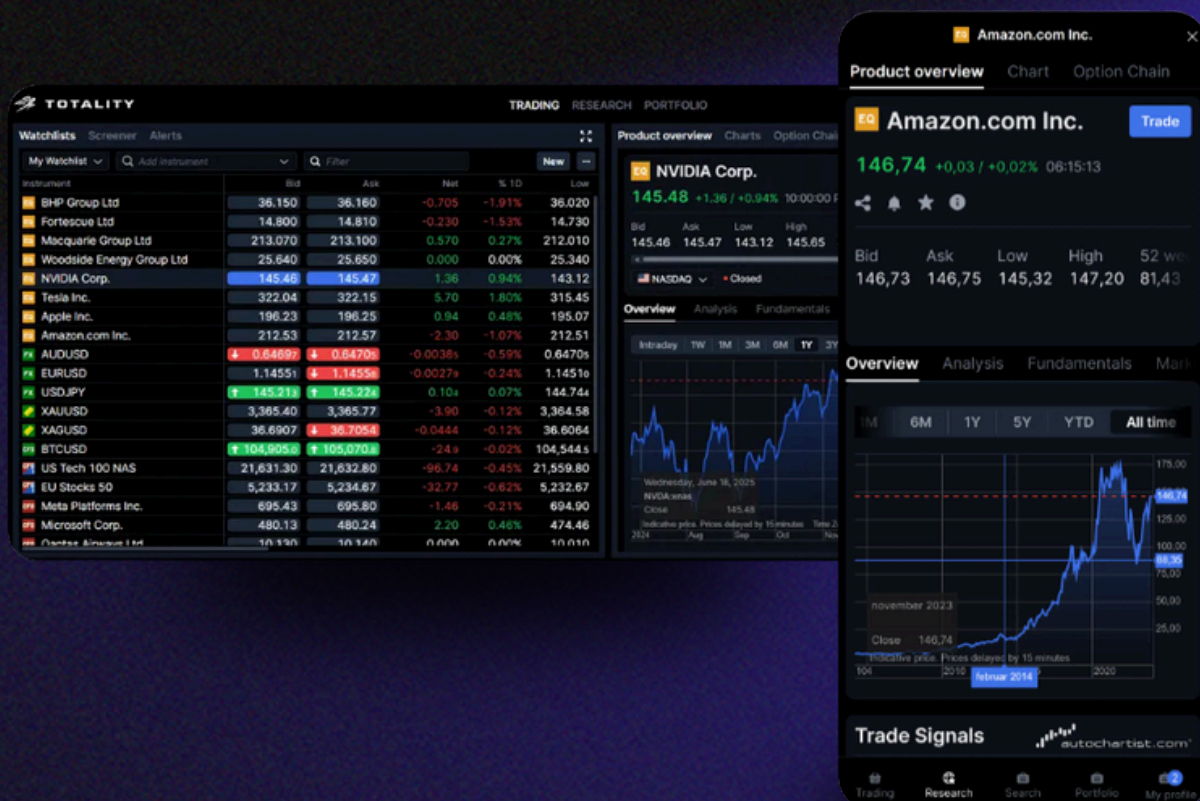


# What is Totality Edge?

Totality Edge (formerly Saxo TraderGo) is your all-in-one trading powerhouse—accessible from any device, whether you're on mobile or desktop. Designed for active traders, it delivers smarter tools, sharper insights, and seamless control, all backed by enterprise-grade security.

Whether you're trading global equities, FX, or options, Totality Edge equips you with the same high-performance tools and precision execution trusted by professional traders.

- Options Matrix: Access personalised, real-time data and trade directly from the matrix.
- Enhanced Trade Ticket: Engineered for speed and efficiency, minimising clicks for faster execution.
- Returns Breakdown: Analyse trade development using time-weighted percentages.
- Portfolio Summary: View current and historical reports of your net holdings and exposure.
- Performance Analysis: Dedicated dashboards visualise your P/L, returns, and performance history.







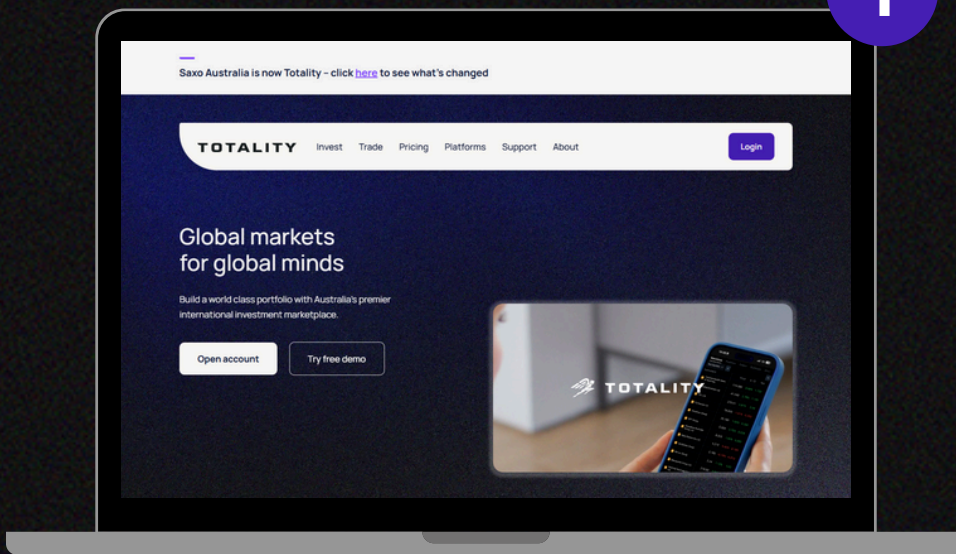
# How to access Totality Edge

There are two ways to access Totality Edge on your mobile or desktop device:

- 1) Direct access through the Totality Edge webpage. (Page 3)
- 2) Access through Totality Core. (page 5)

## How to directly access Totality Edge (Phone & Desktop)

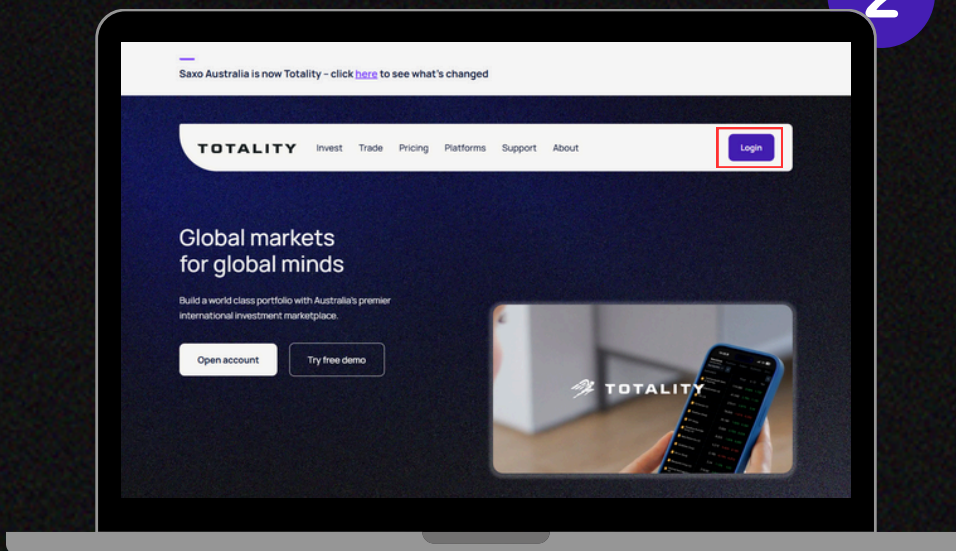
1



Start by opening the Totality.

Web: [www.totality.com.au/](http://www.totality.com.au/)  
Apple App Store: "Totality"  
Google Plat Store: "Totality"

2



Click 'Login'.



3

## Select a platform

No matter your experience or investment goals, you'll find the tools and support to put you in control.



### Totality Core

All-in-one account administration, funding, support and trading platform

Log in to platform



### Totality Edge (SaxoTraderGo)

Our flagship investing and trading powerhouse.

Log in to platform

Click 'Log in to platform' under the 'Totality Edge' heading.

4



LINK DEMO

User ID

Password

☐ Remember User ID

LOG IN

Forgot your password?  
Please call +61 2 8267 9000

© Copyright Totality Wealth Limited 2025

Enter your Saxo User ID. This will be your client account number.

If this is your first time logging in to Totality Edge, please enter your Saxo account password.

5



LINK DEMO

User ID

Password

☐ Remember User ID

**❗ Login was unsuccessful. Please correct the error and try again.**  
Your login attempt was not successful. Please try again.

LOG IN

Forgot your password?  
Please call +61 2 8267 9000

© Copyright Totality Wealth Limited 2025

If you're unable to login, please contact us using the details below. A member of our Client Services team will provide you with a temporary password.

After entering the temporary password, you'll be prompted to reset your password. If you prefer, you can choose to set your Totality Edge password to match your Totality Core or Saxo account password—even if it's the same.

Need Help?

[help@totality.com.au](mailto:help@totality.com.au)

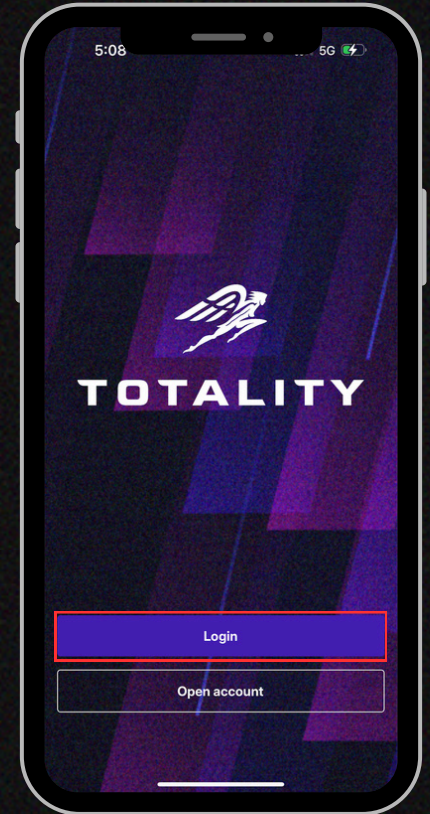
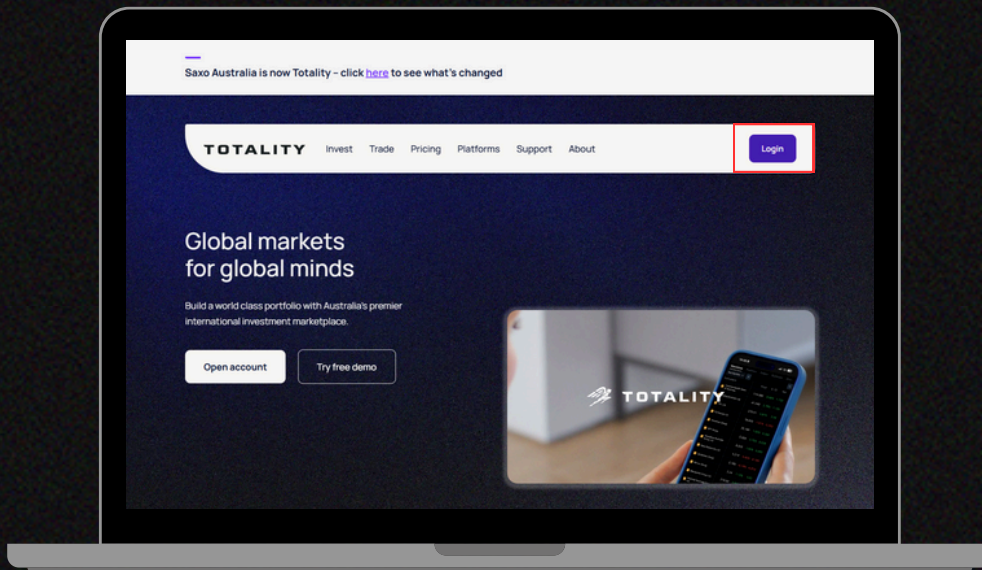
[\(02\) 8267 9000](tel:(02) 8267 9000)



# How to access Totality Edge through Totality Core

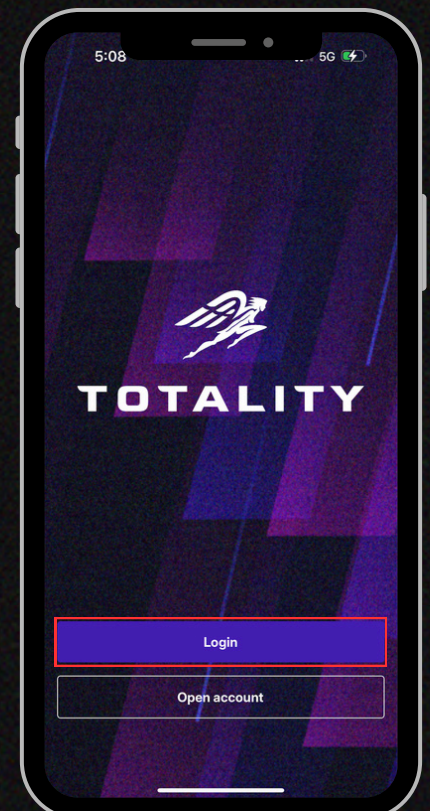
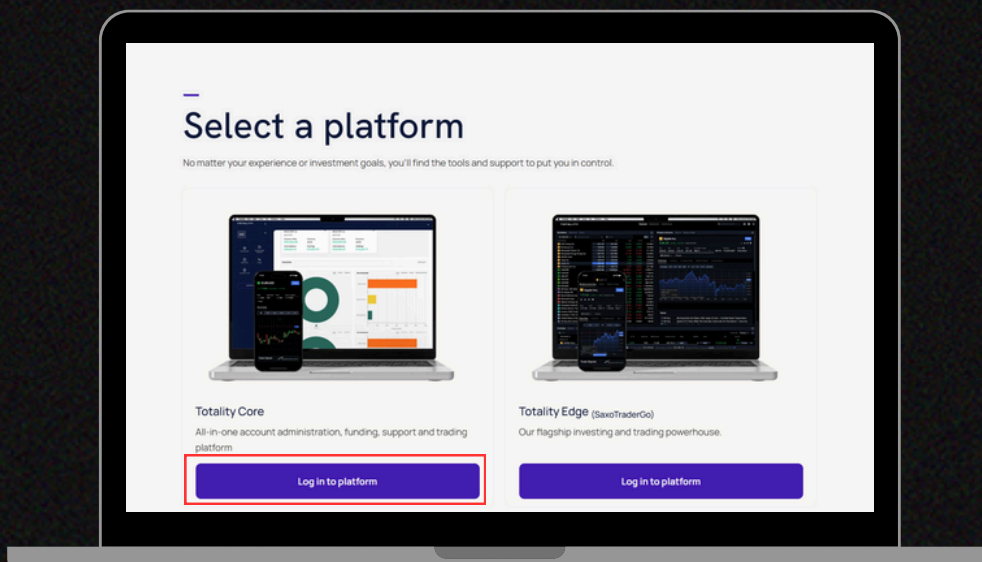
1

Start by opening the Totality website or mobile app and press 'Login'.



2

For desktop devices, please click 'log in to platform' under the 'Totality Core' heading.





## 3

**First time logging into Totality Core?**

**Please note:** If this is your first time logging into Totality Core, please watch the video below or click the PDF links below, to set up your account.

- 🌐 PDF: [First time login - How to log in to the Totality Core mobile app for existing Saxo clients](#)
- 🌐 PDF: [First time login - How to log in to the Totality Web Portal for existing Saxo clients](#)
- ▶️ Video: [First time login - How to log in to the Totality Core App and Web portal for existing Saxo clients](#)

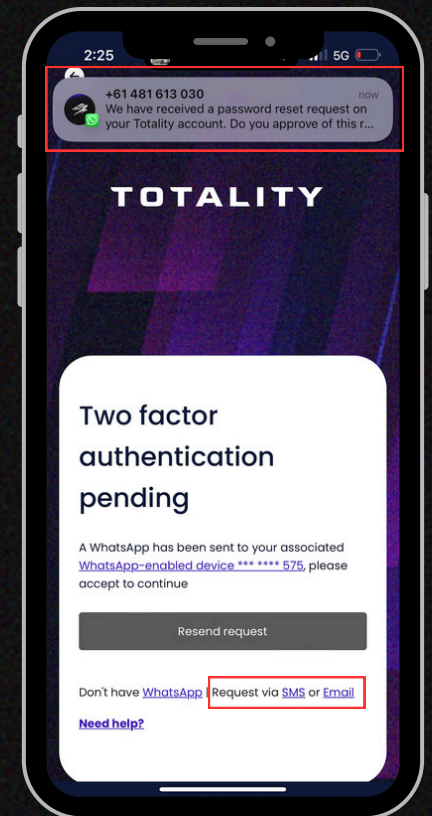
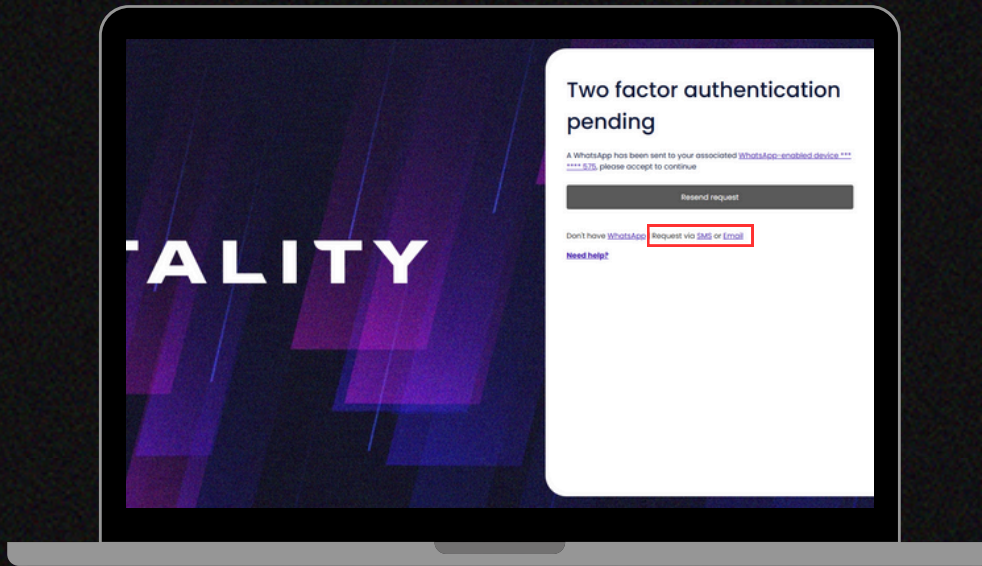




4

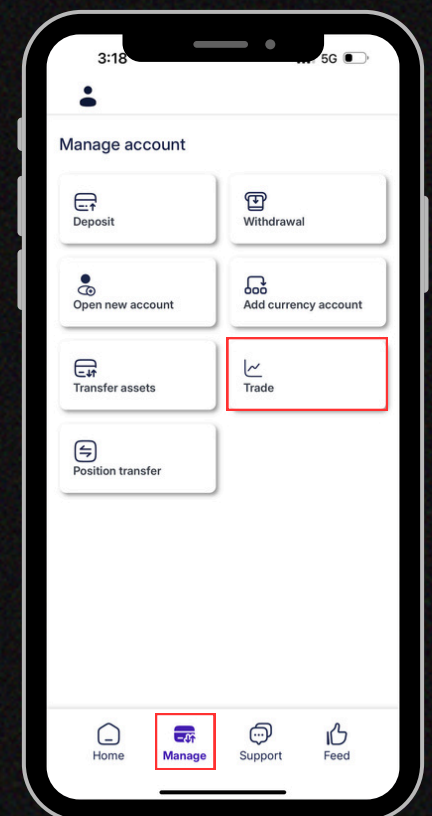
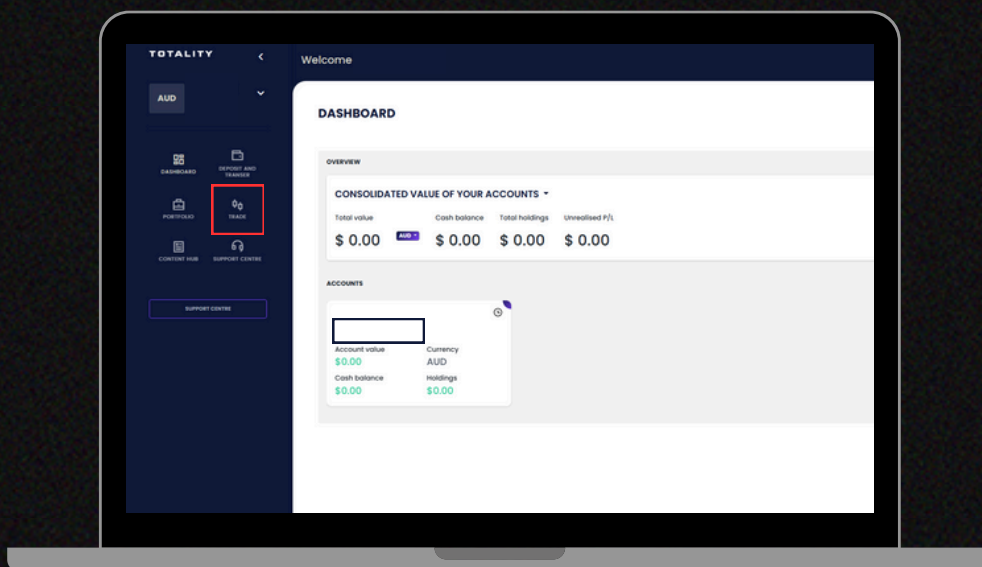
If you have WhatsApp, please check your account and follow the approval prompt.

Alternatively, you can request an SMS or email to receive a 2FA code to enter on the Totality app/platform.



5

Once logged in:  
For desktop, click 'TRADE'.  
For mobile, click 'Manage' then 'Trade'.

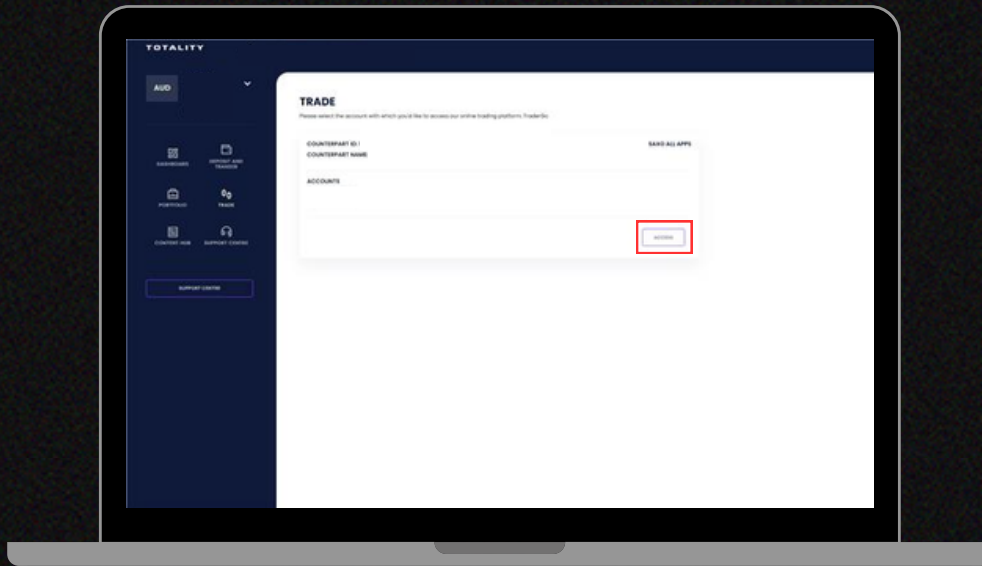




6

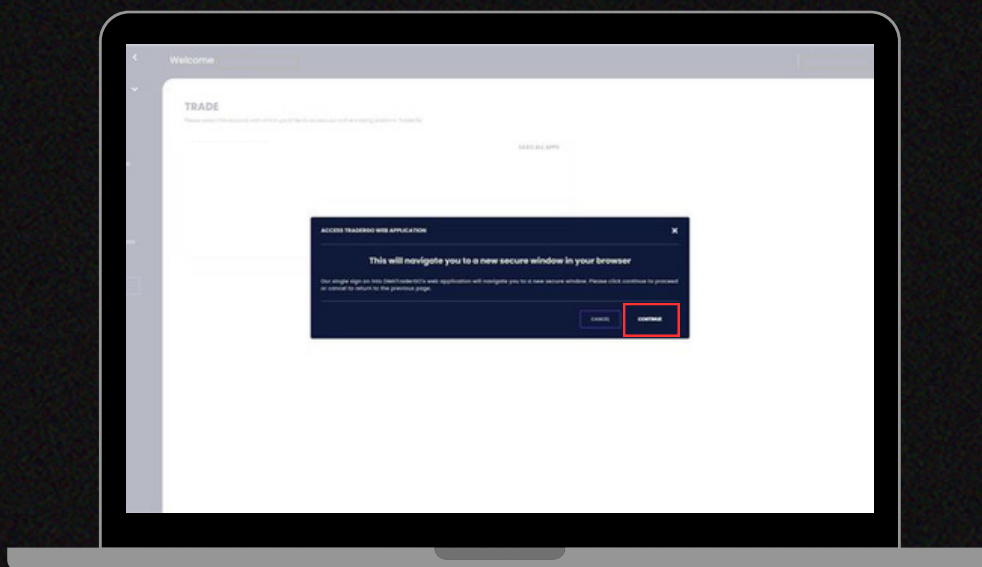
For desktop devices, please choose the account you would like to start trading with and press 'ACCESS'.

For mobile, choose the account you would like to start trading with and press the 'arrow icon'.



7

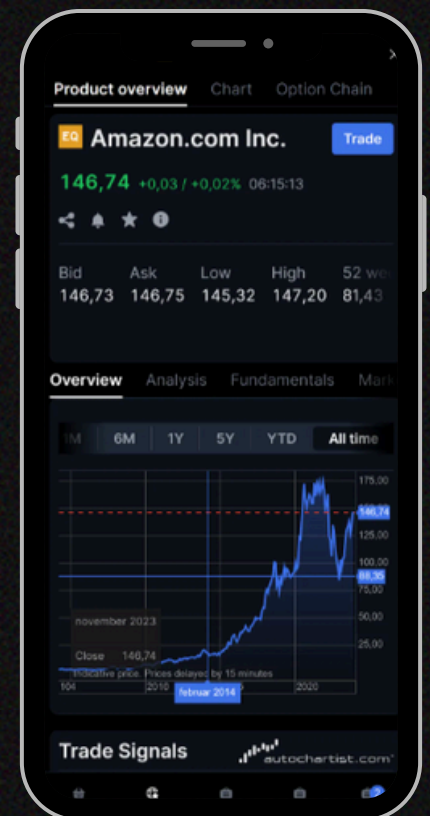
Confirm your account details and press 'Starting trading'.





8

Explore the platform and start trading today!



For questions or support, reach out to our client services team at  
[help@totality.com.au](mailto:help@totality.com.au) or call us on +61 2 8267 9000

