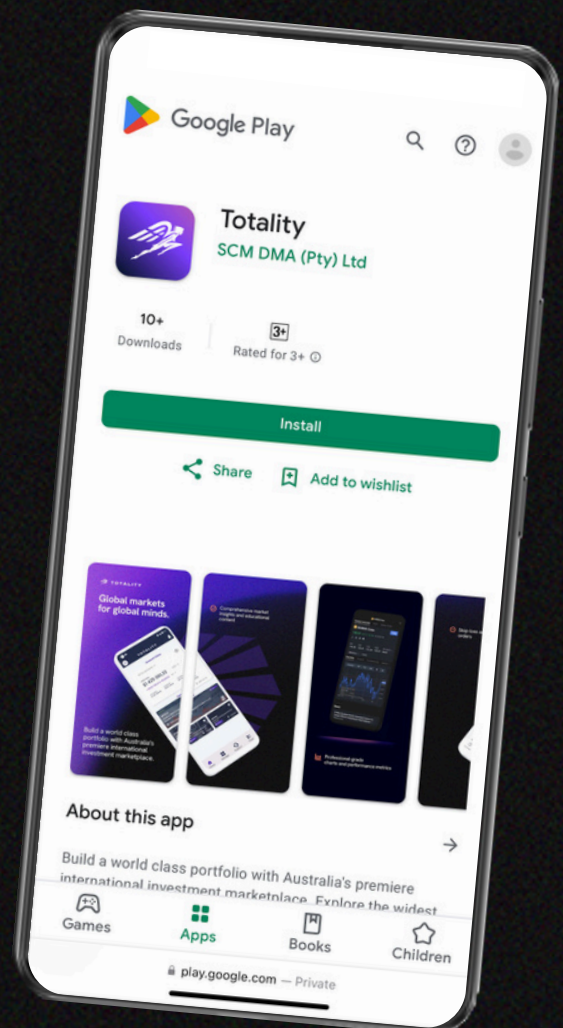


# How to install the Totality Core mobile app on Android







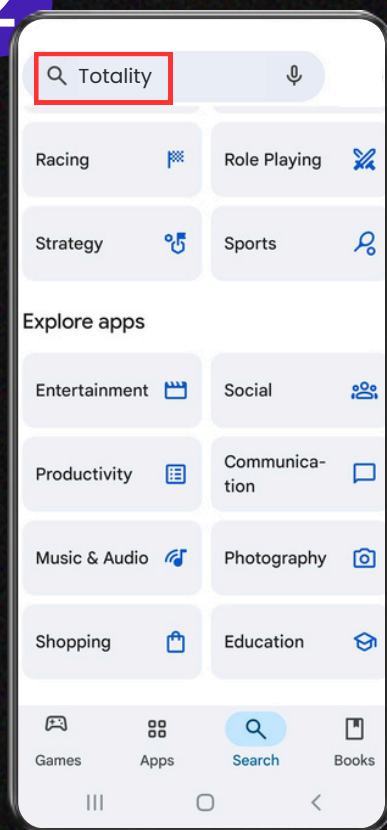
# Walkthrough Guide

1



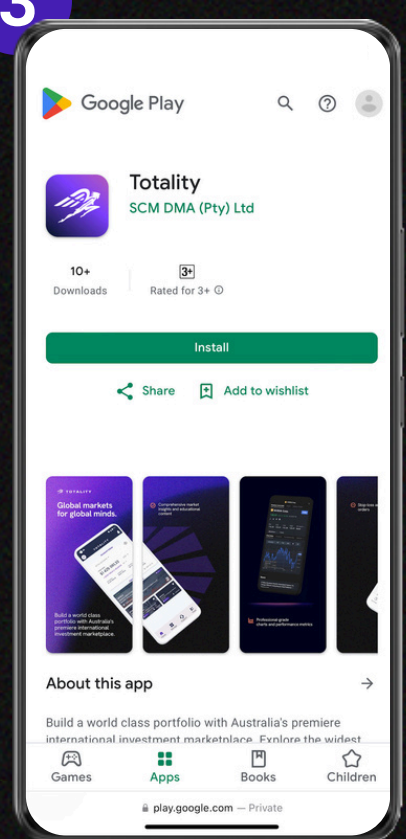
Open the 'Play Store'.

2



In the search bar, type "Totality Core"

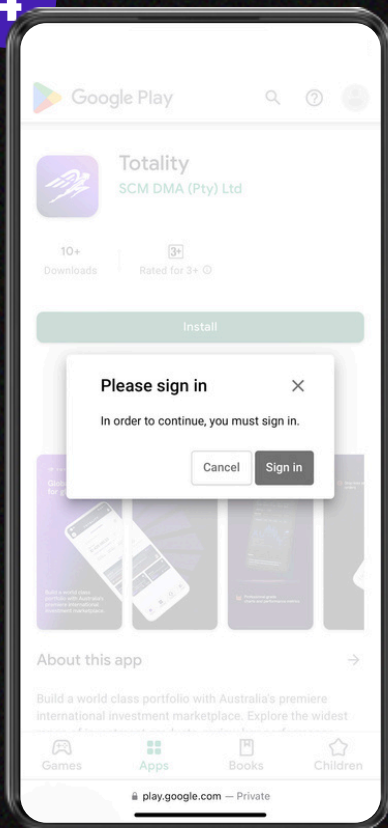
3



Look for the 'Totality Core' app.



4



Tap 'Install'. You may be asked to enter your 'Play Store' password.

5



Once installed, open 'Totality Core' and follow the on-screen instructions to log in or create your account.

For questions or support, reach out to our client services team at [help@totality.com.au](mailto:help@totality.com.au) or call us on +61 2 8267 9000

